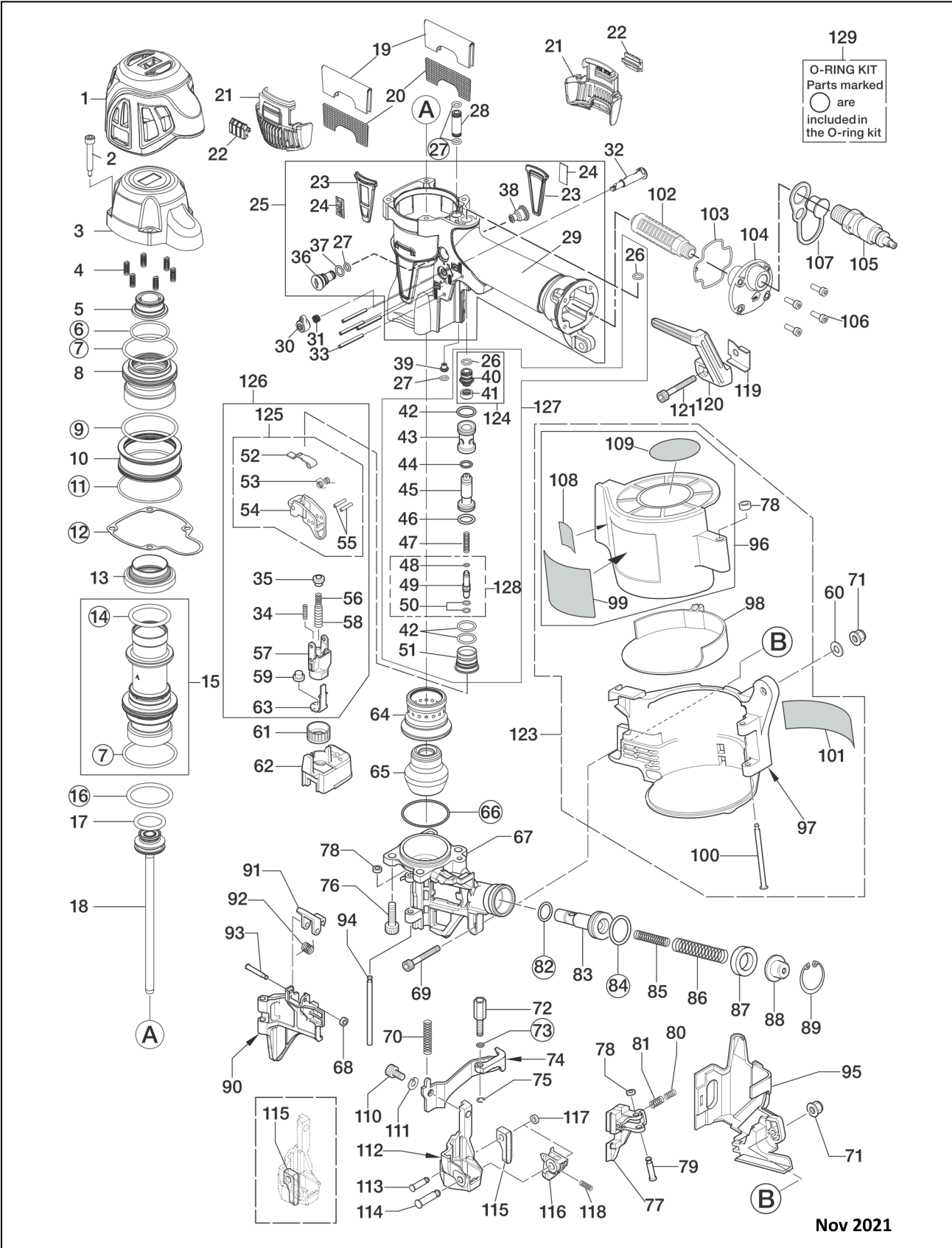


HN65J2

**EXPLODED
VIEW AND SPARE
PARTS LIST**



129
O-RING KIT
Parts marked
○ are
included in
the O-ring kit

No.	Code	Description	No.	Code	Description
1	HN12517	CYLINDER CAP PROTECTOR	65	HN12090	BUMPER
2	HN10338	SCREW 5X36	66	HH14164	O-RING AS 568-030
3	HN12764	CYLINDER CAP	67	HN11411	NOSE
4	KK23650	COMP. SPRING 3650	68	EE39609	RUBBER WASHER 1.8X6X2
5	HN11364	PISTON STOP	69	BB40407	BOLT 5 X 20
6	HH19752	O-RING 1A 2X31	70	KK23952	COMP. SPRING 3952
7	HH11136	O-RING ARP568-132	71	CC00401	ELASTIC STOP NUT M5
8	HN11396	HEAD VALVE PISTON	72	HN11417	CONTACT BOLT
9	HH14906	O-RING AS 568-133	73	HH11903	O-RING 1A 1.2 X 4
10	HN12128	HEAD VALVE GUIDE	74	HN70119	CONTACT ARM B UNIT
11	HH14904	O-RING AS 568-032	75	JJ80010	E-RING 3.2
12	HN11363	CYLINDER CAP SEAL	76	BB40213	BOLT 6 X 25
13	HN11370	CYLINDER SEAL	77	HN11412	FEED PAWL
14	HH11135	O-RING AP31.5	78	EE39602	WASHER 7
15	HN81140	CYLINDER A ASSY	79	FF41817	STEP PIN 1817
16	HH11174	O-RING 1A P35	80	KK23788	COMP. SPRING 3788
17	HH11805	O-RING P22A	81	KK23710	COMP. SPRING 3710
18	HN70532	MAIN PISTON UNIT	82	HH11113	O-RING AP9
19	HN11376	FILTER B	83	HN11390	FEED PISTON
20	HN11375	FILTER A	84	HH11106	O-RING AP16
21	HN12054	EXHAUST COVER	85	KK23627	COMP. SPRING 3627
22	HA11009	FIXING PLATE	86	KK23896	COMP. SPRING 3896
23	HN12115	NAME RUBBER	87	CN32093	FEED PISTON STOP
24	PJ11961	NAME PLATE	88	HN10299	SPRING COLLAR
25	HN81500	BODY UNIT	89	JJ22408	C-RING 24
26	HH19127	O-RING A 1.5X5.5	90	HN11413	DOOR
27	HH19722	O-RING A1.5X5	91	CN33679	DOOR LATCH
28	HN11442	PIPE	92	KK33353	SPRING 3353
29	HN12248	GRIP COVER	93	FF41599	PIN 1599
30	HN12123	TRIGGER LOCK DIAL	94	FF31250	STRAIGH PIN 1250
31	KK23507	SPRING 3507	95	HN11428	ARM COVER
32	CN35075	TRIGGER LOCK LEVER	96	HN70539	MAGAZINE CAP ASSY
33	FF21235	SPRING PIN 3X30	97	HN11552	MAGAZINE
34	KK23129	COMPRESSION SPRING 3129	98	CN34273	MAGAZINE SPACER
35	HN11420	ARM GUIDE PIN	99	HN12776	MODEL NAME LABEL
36	HA18698	DUSTER STOPPER	100	FF41526	PIN 1526
37	HH19772	O-RING 1A 1.5X7.5	101	HN12767	WARNING LABEL
38	HN12742	BLIND CAP	102	TA17024	FILTER A
39	HN10820	FEED NOZZLE	103	HN12070	END CAP SEAL
40	HN10043	PILOT CAP	104	HA18729	END CAP
41	HN10018	PILOT SEAL	105	HN70264	AIR PLUG H-FPM
42	HH12105	O-RING 1A 1.5 X 12.8	106	BB40704	BOLT 4X12
43	HN10016	TRIGGER VALVE HOUSING	107	HN10316	END PLUG CAP
44	HH11208	O-RING BP6	108	HN11555	WARNING LABEL B
45	HN10017	PILOT VALVE	109	HN12778	WARNING LABEL ISO
46	HH11132	O-RING 1AP10A	110	BB40412	SCREW 6MM X 12MM
47	KK23619	COMP. SPRING 3619	111	EE11101	SPRING WASHER 2-6
48	HH19707	O-RING A1.4X2.5	112	HN11414	CONTACT NOSE
49	HN11436	TRIGGER VALVE CAP	113	FF41849	STEP PIN 1849
50	HH19214	O-RING 1B 1.5X3	114	FF41848	STEP PIN 1848
51	HN12172	TRIGGER VALVE CAP	115	HN11426	AIMING GUIDE LOCATOR
52	HN10100	CONTACT LEVER	116	HN11415	NAIL LEG GUIDE
53	KK33300	SPRING 3300	117	EE39620	RUBBER WASHER 4X7X2.5
54	HN10403	TRIGGER	118	KK23933	COMP. SPRING 3933
55	FF22402	SPRING PIN 3X16	119	HN11434	HOOK STOPPER
56	KK23735	COMP. SPRING 3736	120	HN10739	HANGER
57	HN11418	ARM GUIDE	121	BB40432	SOC.HD.CAP SCREW
58	KK23736	COMP. SPRING 3735	123	HN70537	MAGAZINE ASSY
59	HN10357	CONTACT BUMPER	124	HN81216	PILOT CAP ASSY
60	EE31105	PLAIN WASHER 1-6	125	HN80079	TRIGGER ASSY
61	HN10026	ADJUST DIAL	126	HN81092	ARM GUIDE KIT ASSY
62	HN11389	ADJUST SPACER	127	HN81502	TRIGGER VALVE KIT ASSY
63	HN11435	CONTACT ARM A	128	HN81099	TRIGGER VALVE STEM ASSY
64	HN12089	CYLINDER B	129	HN81501	O-RING KIT